

SDN PowerConnect™

Surface-Mount Panel Instructions

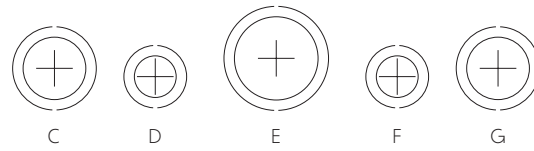
Item #: 1871026



I. Power Panel - General:

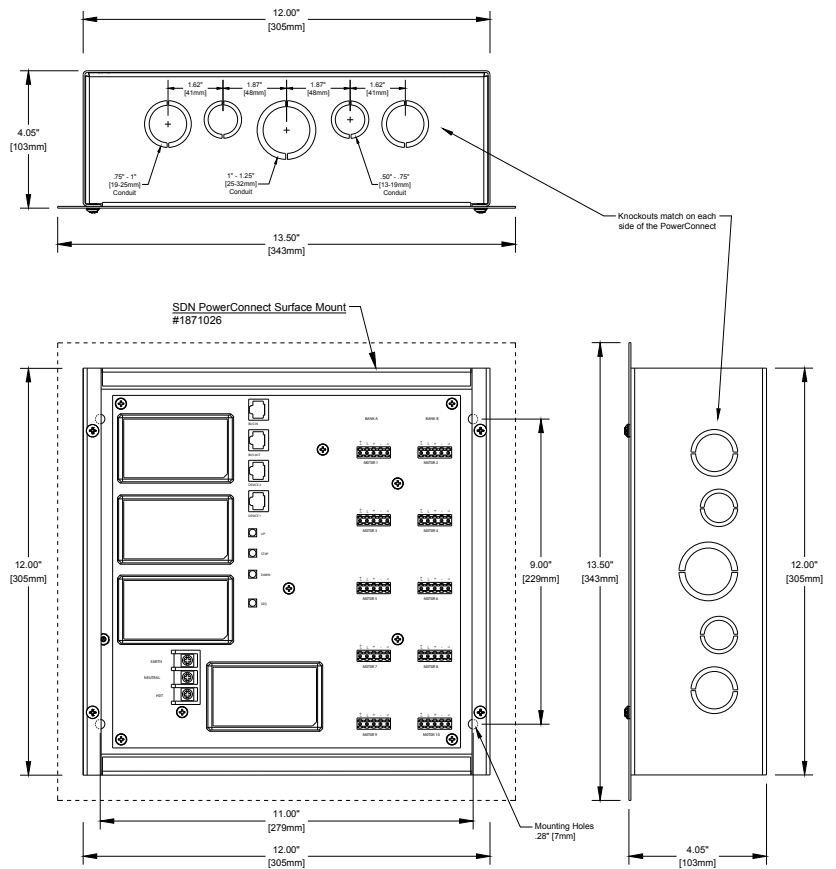
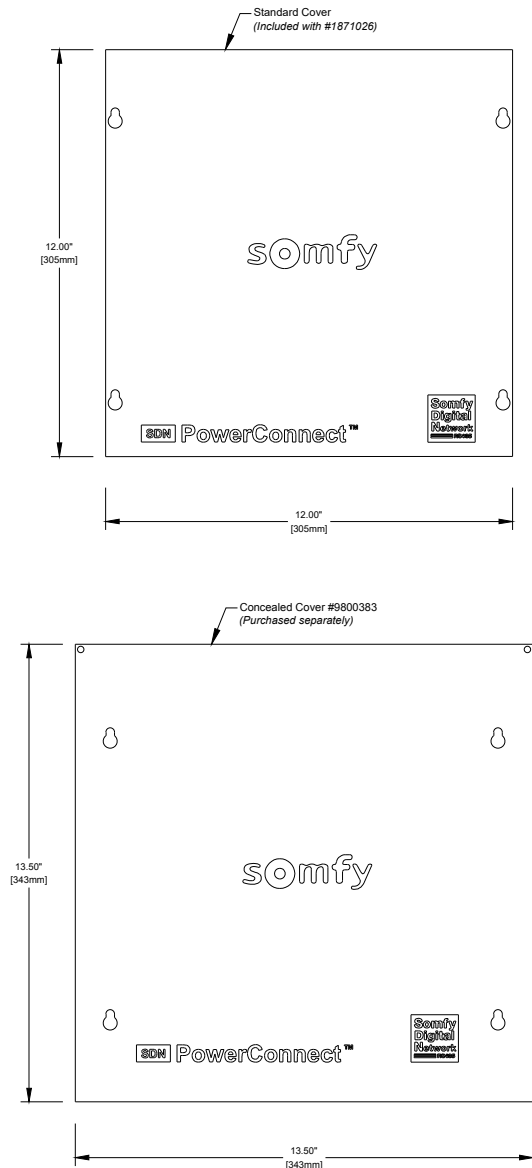
- a. Compatible with Somfy's line of 24V DC tubular motors:
 - i. SDN (Somfy Digital Network™) – Integrated RS485
 - ii. RTS (Radio Technology Somfy®) – Integrated RF
 - iii. 24V DC outputs are Class 2 per NEC table 11(B)
- b. Power Panel can be surface- or flush-mounted
- c. Indoor use only
- d. Dimensions:
 - i. Cover: 12" (W) x 12" (H)
 - ii. Enclosure: 12" (W) x 12" (H) x 4" (D)

- e. Knock-outs, concentric for conduit, 5 total
 - i. C & G: 0.75" (1")
 - ii. D & F: 0.5" (0.75")
 - iii. E: 1" (1.25")



- f. SDN Motor cable available
 - i. Non-plenum #9020126 (US), #9020452 (CA)
 - ii. Plenum #9020127 (US), #9020453 (CA)

II. Mechanical Details



Mounting Directions

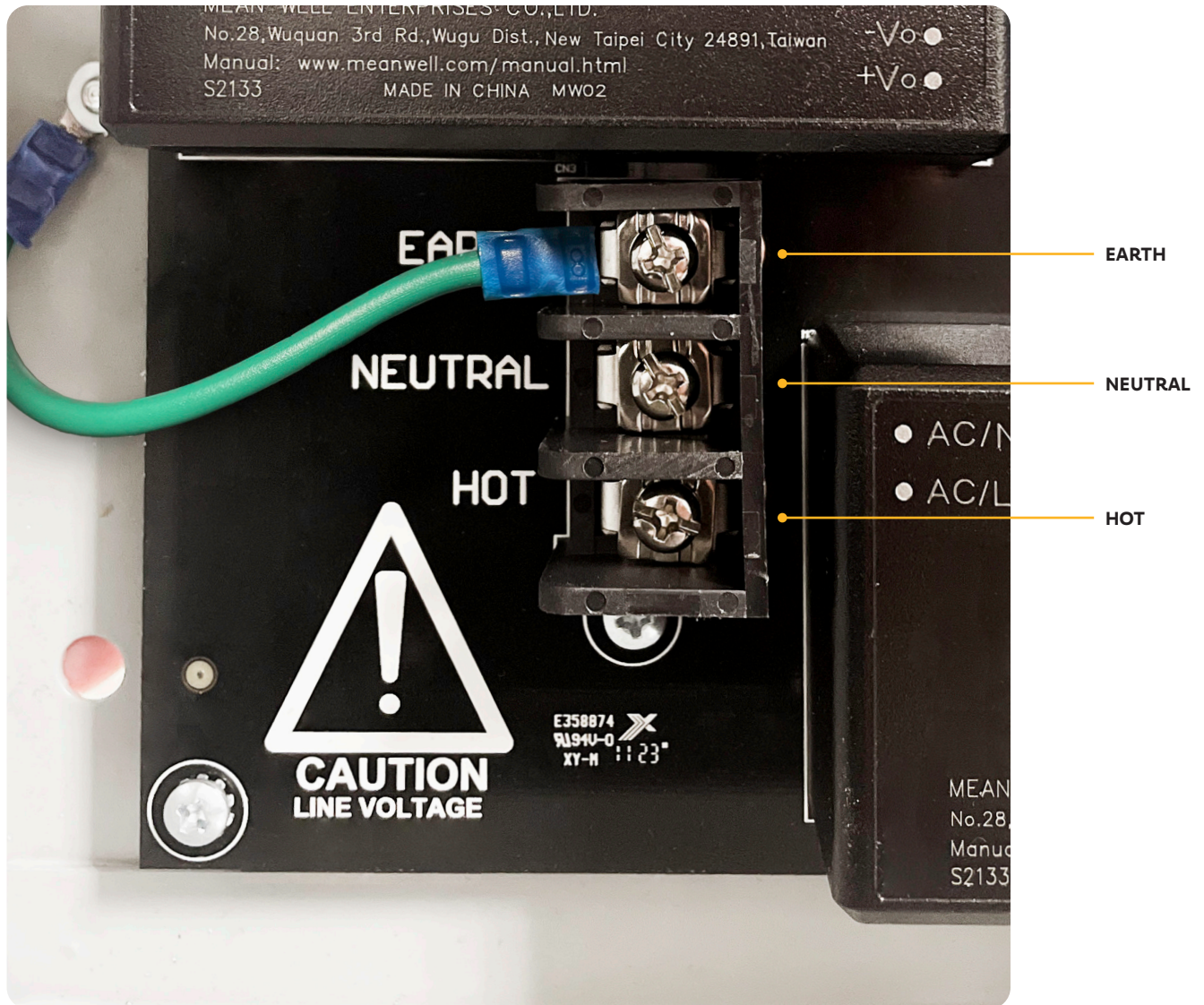
Mounting holes on back of box. Use appropriate fasteners for the surface you are mounting to.

III. Line Voltage Warning:

WARNING:

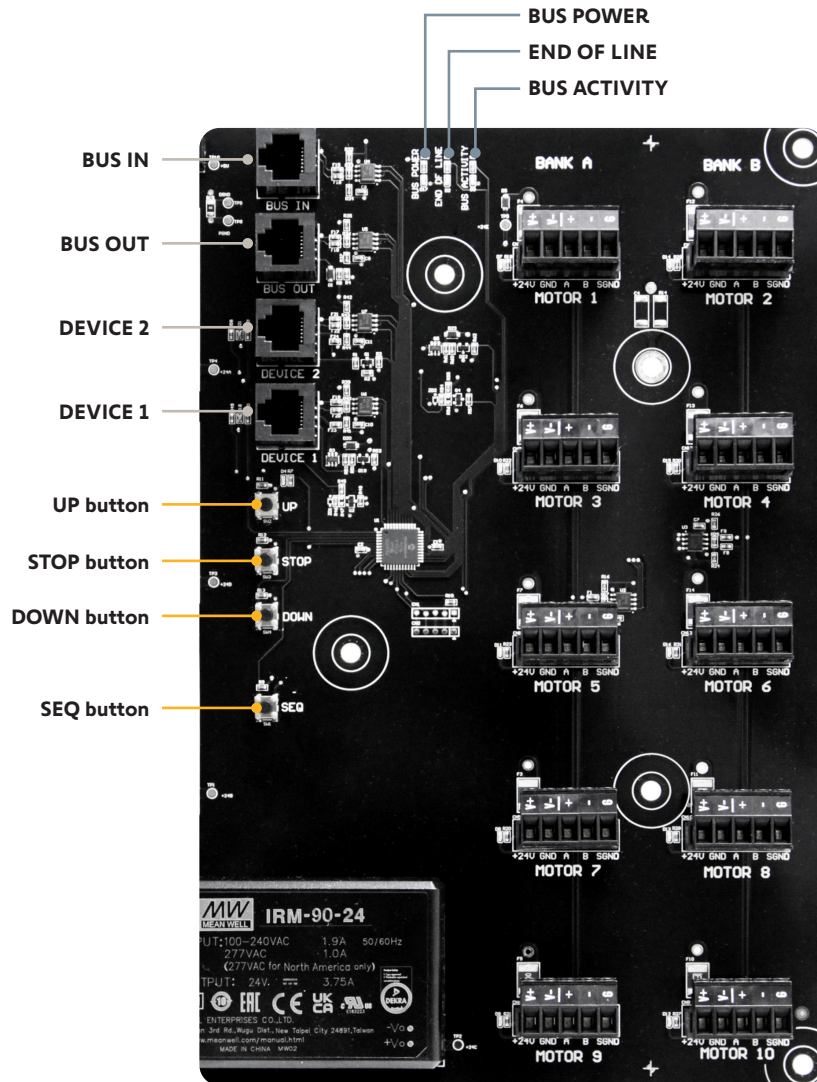


- ONLY A LICENSED ELECTRICIAN IS AUTHORIZED TO CONNECT INCOMING POWER AND ENERGIZE THE CIRCUIT.
- INSTALLATION MUST FOLLOW ALL LOCAL AND NATIONAL ELECTRICAL CODES.



Input: 120V AC, 60Hz, 7.2A max
Output: Ten Class 2, 24V DC, 2A max each
AC Service Conductors, 60°C min

IV. Motor Connections:



V+, V- 24V DC Power to motor
(RTS motors only use these 2 connections)

+, - RS485 Communication

G RS485 Signal ground

Refer to motor instructions for further information

*Optional oversized cover available, #9800383



Connect existing SDN v1 keypads to the board's device port using an optional RJ45 adaptor (9029460).